

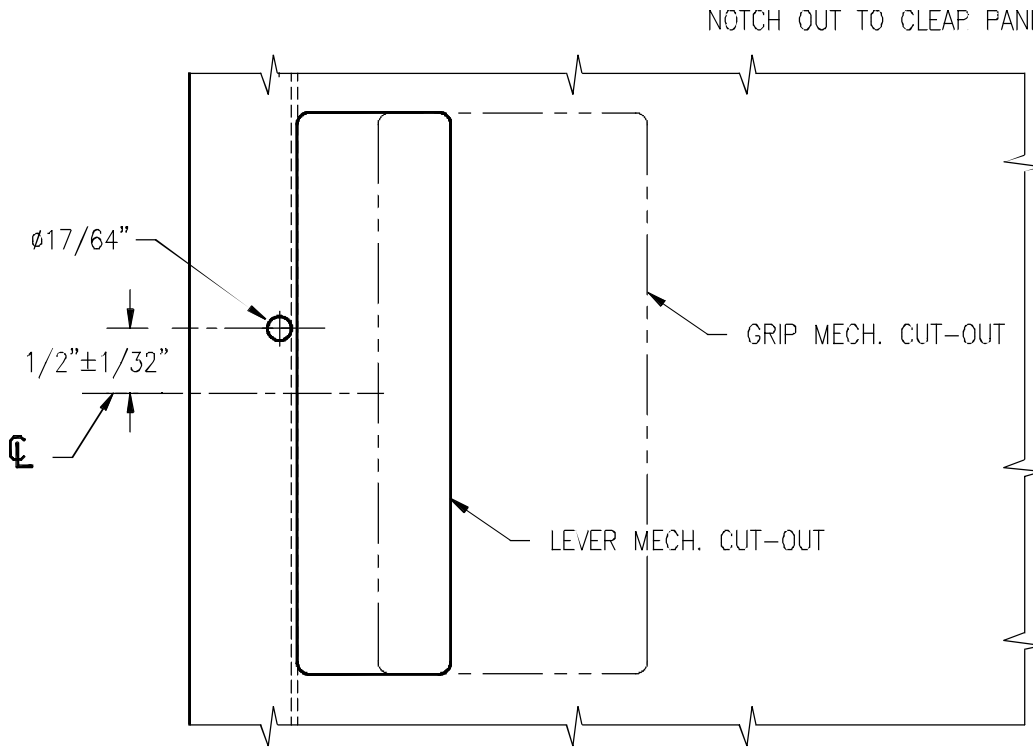
TECHNICAL DATA SHEET # 27

01

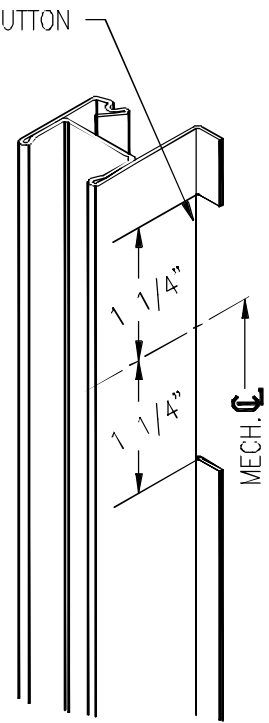
FIELD DOOR PREPARATION FOR STANDARD PANIC



SECTION VIEW



ELEVATION DOOR BODY - PUSH SIDE



LOCKING CHANNEL MOD. FOR USE WITH PANIC.

DO NOT SCALE

NOTE: WHEN CHANGING TO PANIC FUNCTION IN FIELD, MECHANISM MUST BE CHANGED TO PANIC MECHANISM.



Total Door SYSTEMS™
Global Leader in Integrated Access Technology™

TEL. (800) 852-6660

www.totaldoor.com

© Total Door 2013

FILE NAME

TDS27-01

DATE 8/30/13